



22<sup>nd</sup> – 24<sup>th</sup> May 2025

ECHO Masterclass

NICE, FRANCE

Presented by [criticalcare-sonography.com](http://criticalcare-sonography.com)

**Programme – full 3-days (first day online learning) followed by 2 days of intensive workshops with a clinical focus. Includes assessment of LV function, assessment of RV function, acute vs chronic pulmonary hypertension, aortic measurements and pathology, basic valvular disorders (MR, MS), understanding M mode and spectral doppler, assessment of pericardial effusion and tamponade physiology, clinical cases, and hands on experience!**

- Extensive online preparation course included, accessible on registration
- Small numbers, small group boutique experience
- Experienced specialist emergency physicians and sonographers tutoring
- Hands on, engaging course work, with a clinical focus.
- Simulator demonstrating 3D anatomy.

3 full days AU\$3300  
**Numbers are limited!**



## **More information**

This course is run in English

### **What people have said about our course:**

*"A truly awesome 2-day course. The teaching was excellent. Loved the putting into the clinical situation approach. Thank you all"*

*"It was an excellent course. Great to have a variety of instructors with different clinical perspectives."*

*"Amazing exceptional in every aspect"*

*"Excellent course pitched at the right level for myself. Very surprised by the 3 course sit down lunch which was excellent. Thoroughly enjoyable. Thank you very much for the effort put into organising this event."*

*"Excellent lectures. Tutors had great enthusiasm and knowledge"*

*"The simulator made ECHO so much easier to understand"*

### **Location:**

- Hotel Aston La Scala, Nice France

### **Accommodation:**

- Hotel Aston Lascalea <https://hotel-aston.com/>
- Please quote the code **SONO25** when making the booking. Ask for south facing room if possible
- Other alternatives: Nice has a very large number of hotels to choose from but Happy cultures hotels are good value. Look for one close to the Aston Lascalea hotel <https://www.happyculture.com/en/map.html#191>
- Nice Pebbles for apartments <https://www.nicepebbles.com/>

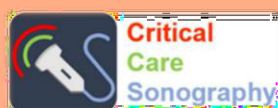
**\*\*Note that the Monaco Grand Prix is being held on the weekend of the 24th/25th of May and accommodation may be tight so please book early! \*\***

### **How to register:**

<https://criticalcare-sonography.com/echo-nice-france/>

### **Follow us on LinkedIn or Instagram!** - ccsonography

Contact: ccsonography@gmail.com or info@criticalcare-sonography.com



---

# Program

---

## Day 1: 22<sup>nd</sup> May

- This is an online working day. There are 8 hours of lectures to go through including multiple choice questions which are compulsory to start the course
- The lectures and multiple choice questions are accessible on line at <https://criticalcare-sonography.com/product/echo-masterclass/>

## Day 2: 23<sup>rd</sup> May

Time	
8.30 – 8.40	Introduction
8.40 – 9.00	Principles of Doppler
9.00 – 9.30	<b>Scanning</b> Use of Doppler: PW vs CW, Colour
9.30 – 9.45	Lecture –Measurement of SV
9.45 – 10.45	<b>Scanning</b> Measurement VTI
10.45 – 11.00	<b>Morning Tea</b>
11.00 – 11.20	Lecture LV function Assessment
11.20 – 12.40	<b>Scanning</b> LV function assessment
12.40 – 13.10	<b>Lunch</b>
13.10 – 13.40	Lecture RV assessment /acute vs chronic PHT
14.40 – 15.00	<b>Scanning</b> RV assessment

### **Day 3: 24th May**

**Time**

8.00 – 8.20	Lecture Ascending aorta/aortic root
8.20 – 9.20	<b>Scanning</b> Aorta
9.20 – 9.40	<b>Morning Tea</b>
9.40 – 10.40	Lecture Assessment of Valves
10.40 – 12.00	<b>Scanning</b>
12.00 – 13.00	<b>Lunch</b>
13.30 – 14.00	Pericardial effusion and tamponade
14.00– 15.00	<b>Scanning</b> SIM
15.00 – 15.15	Quiz