



17<sup>th</sup> – 21<sup>st</sup> May 2025

Comprehensive Point – of – Care Ultrasound  
Workshop

NICE, FRANCE

Presented by [criticalcare-sonography.com](http://criticalcare-sonography.com)

**Programme** – full 5-day programme (first day online learning) followed by 4-day workshop. Includes – AAA (aorta), Biliary, Renal, DVT, Early pregnancy, ECHO, EFAST, Lung, Vascular access, Ocular ultrasound, regional anaesthesia (fascia iliaca and serratus anterior blocks)

- Extensive online preparation course included, accessible on registration
- Small numbers with 3:1 tutor/ facilitator ratio – boutique workshops
- Experienced specialist emergency physicians and sonographers tutoring
- Hands on, engaging course work, with a clinical focus
- Simulator demonstrating 3D anatomy
- Entire day devoted to basic and fundamental cardiac ECHO
- Accredited by ASUM, ACEM, ACCRM, CICM and EACCME

5 full days AU\$5000

**Numbers are limited!**





## More information

This course is in English

### What people have said about our course:

*"Thanks for a wonderful course with good hands-on skills"*

*"Great pre-course material. Good to be able to do it before the course and avoid death by power point."*

*"Really good course, very informative and great to get practice on different machines. SIMS very useful"*

*"Love the simulation "*

*" The simulator made ECHO so much easier to understand "*

### Location:

Hotel Aston Lascala , Nice France

### Accommodation:

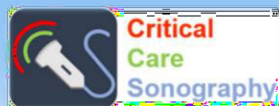
- Hotel Aston Lascala <https://hotel-aston.com/>  
Please quote the code SONO25 when making the booking. Ask for south facing room if possible
- Other alternatives:  
Nice has a very large number of hotels to choose from but  
Happy cultures hotels are good value. Look for one close to the Aston Lascala hotel  
<https://www.happyculture.com/en/map.html#191>  
Nice Pebbles for apartments <https://www.nicepebbles.com/>
- *Note that the Monaco Grand Prix is being held on the weekend of the 24th/25th of May and accommodation may be tight so please book your accommodation early*

### How to register

To register please click on or enter into your browser <https://criticalcare-sonography.com/pocus-nice-france/>

Cost of course includes all activities which are on a voluntary basis including dinners and lunches

### Follow us on LinkedIn or Instagram! ccsonography



---

# Program

---

## Day 1

**Pre reading – 8 -10 hours**

## Day 2

<b>Time</b>	<b>Topic</b>
07.30	Registration
08.00-08.10	Welcome
08.10-08.30	AAA General overview
<b>08.30-10. 30</b>	<b>AAA Scanning</b>
<b>10. 30 – 10.40</b>	AAA Safari
10.40-10.55	<b>MORNING TEA</b>
10.55-11.15	FAST General Overview
<b>11.15-13.15</b>	<b>FAST Scanning</b>
<b>13.15 - 13.25</b>	FAST Safari
13.25-13.55	<b>LUNCH</b>
13.55-14.15	DVT overview
<b>14.15- 15.35</b>	<b>Scanning</b>
15.35-16.05	DVT Abnormals
16.05-16.25	Pictionary

### Day 3

Time	Topic
08.00-08.30	Biliary & CBD General Overview
<b>08.30-10.30</b>	<b>Scanning biliary- Tutors</b>
<b>10.30 -10.40</b>	Biliary Safari
10.40-10.55	<b>MORNING TEA</b>
<b>10.55-11.10</b>	Renal general overview
<b>11.10-12.10</b>	<b>Scanning renal</b>
12.10-12.40	<b>LUNCH</b>
12.40-13.00	Early pregnancy overview
<b>13.00 – 14.00</b>	<b>Scanning pregnancy</b>
<b>14.00 – 14.15</b>	Pregnancy Safari
1415 – 14.35	Lung General overview
<b>1435 – 16.05</b>	<b>Scanning Normal lung</b>
<b>16.05- 16.35</b>	Scanning Safari in individual groups

### Day 4

Time	Topic
08.00-08.30	ECHO General overview (30 min)
<b>08.30-10.30</b>	<b>Scanning PLAX and PSAX views</b>
10.30 – 10.45	<b>MORNING TEA</b>
10.45 -11.00	Overview of 4CV and subcostal view (15 min)
<b>11.00 -13.00</b>	<b>Scanning 4CV and subcostal</b>
13.00-13.30	<b>LUNCH</b>
<b>13.30 -15.30</b>	<b>Scanning – putting it all together</b>

**15.30 -16.00**

ECHO Safari

### **Day 5**

<b>Time</b>	<b>Topic</b>
<b>08.00-09.00</b>	Cannulation, FIB, Serratus anterior block
09.00-09.20	Eye Lecture
<b>09.20 -09.50</b>	<b>Scanning – Eye</b>
<b>9.50 – 11.50</b>	<b>Scanning free for All</b>
<b>11.50 -12.10</b>	<b>MORNING TEA/LUNCH</b>
12.10-12.30	The shocked patient lecture
<b>12.30-13.30</b>	<b>SIM (60 min)</b>
13.30	Review, certificates, feedback